

PENTAX *istD FIRMWARE UPDATE V.1.12

Pentax is pleased to announce that version 1.12 of the firmware for the *istD is now available. Please note, this most recent firmware download incorporates all current changes/additions, as well as any changes/additions from prior firmware versions.

CHANGES FOR V.1.12

- Support for 4GB and higher memory cards.

CHANGES FOR V.1.11

- This version of the *istD firmware will fully prepare your camera for use with the Pentax Remote Assistant software (available as a separate download). The Remote Assistant software will allow you to control various *istD functions from your computer.
- [Click here](#) for a PDF datasheet (8.29kb) discussing changes in firmware versions 1.10 and 1.11 in more detail.

CHANGES FOR V.1.10

- You can use the HyM (hyper manual) function when your lens aperture ring is set to a position other than the "A" position.
- You can use EV compensation in the M (manual) mode.
- If you are using the auto bracketing mode and the camera automatically powers down after a period of inactivity, the auto bracketing mode will not be cancelled. Note that turning off your camera normally will cancel the auto bracketing mode. This enhancement only applies when the *istD engages its auto-power-off function.
- The file format and file system of the *istD are compatible with the EXIF 2.21 and the DCF 2.0 standards. When you set [Color Space] in the *istD custom function menu to [Adobe RGB], your TIFF and JPEG image file names will change from "IMGpxxxx" to "_IGPxxxx" where "xxxx" is a 4 digit numeral.

PREPARATION

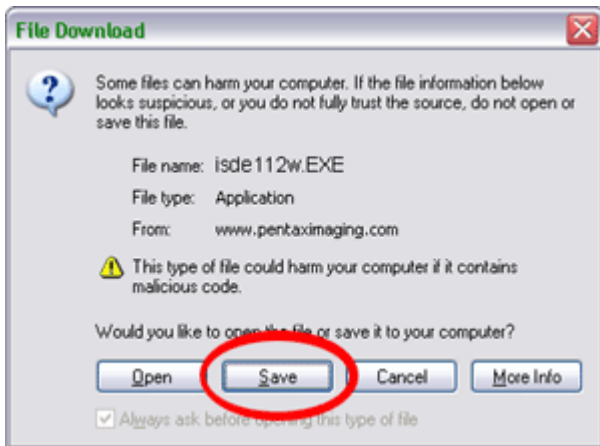
Before you update your *istD camera's firmware, please do the following:

1. Check your current firmware version, to verify that your camera can be updated. To do this, hold down your camera's MENU button while turning the camera on. Your camera's LCD screen will display the current version of the firmware. Make sure the current version is prior to this update of 1.12. For example, versions 1.00, 1.10 or 1.11 can be updated to version 1.12.
2. Have a blank memory card ready. This memory card should be freshly formatted by your camera or otherwise be empty of all files.
3. Have your AC adapter ready for use during the update, or make sure your batteries are fresh and have a full charge.

INSTRUCTIONS - WINDOWS DOWNLOAD

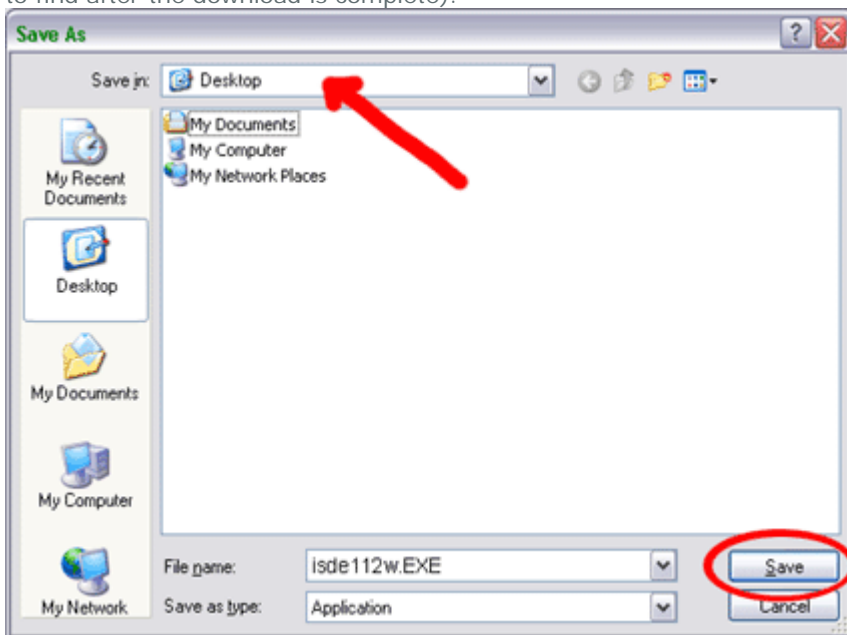
You may wish to print this page to use as a reference during the firmware update procedure.

1. Click the download link at the bottom of this instruction page to download the firmware archive file. When you click the download link, you will see the following dialogue box:



Click SAVE.

Save this file on your computer's hard drive (e.g. save it to the desktop, which will make it easy to find after the download is complete).

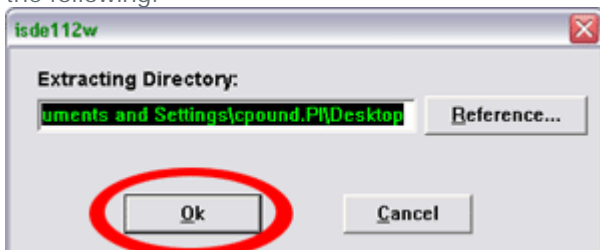


The name of the download file is isde112w.EXE and it is a self-extracting file.



isde112w.EXE

2. Double click the isde112w.EXE download file to expand it. You will see a dialogue box similar to the following:



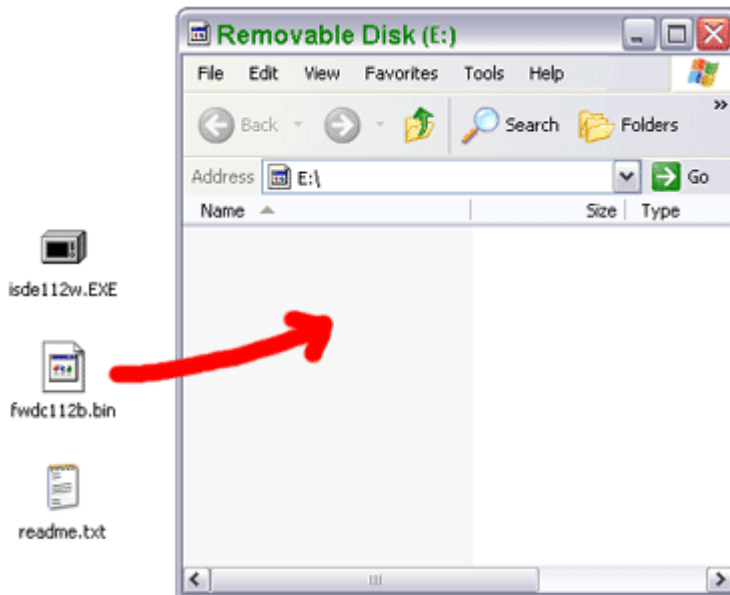
Click the OK button.

3. After clicking OK, two new files will be created alongside the isde112w.EXE file:

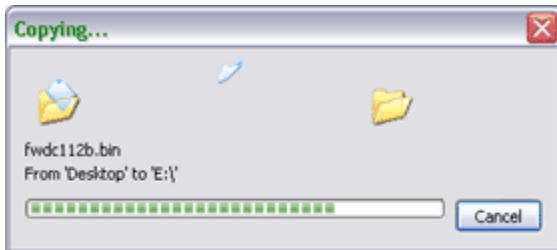


The fwdc112b.bin file, circled above, is the actual firmware update file you will be using to update your camera. The Readme.txt file is a text document with update instructions, similar to the instructions on this page.

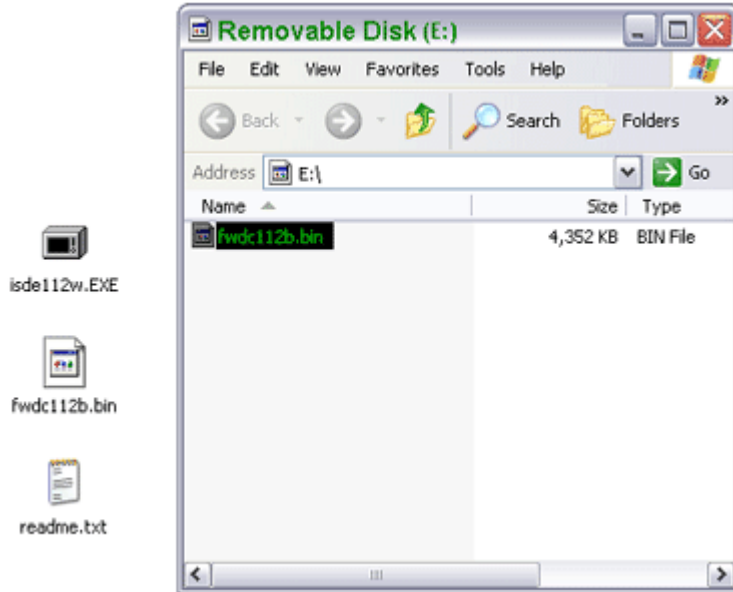
4. You must copy the fwdc112b.bin file to your camera's memory card. When you connect the camera directly to your computer (or if you use a memory card reader), the memory card appears as a removable disk drive in the My Computer window.



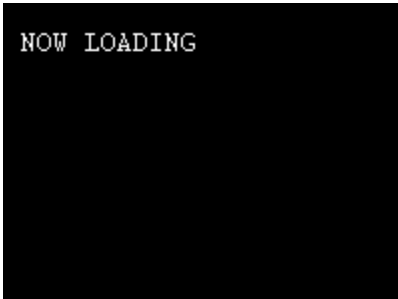
Drag the fwdc112b.bin file from the desktop to your removable disk window (which is the camera's memory card) as shown above. You must put the fwdc112b.bin file directly onto the removable disk; it cannot be in any sub-folders. It must be on the top (or root) level of the removable disk.



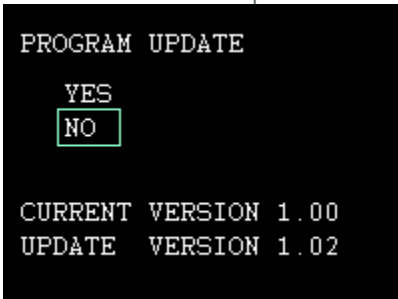
This will copy the firmware update file to the removable disk as shown below.



- Now that you have copied the firmware update file to your camera's memory card, you are ready to install it. Make sure your camera is turned off and disconnected from the computer. Make sure that the memory card containing the firmware update file is inserted into your camera. Also, make sure you that you have adequate power in your camera. We recommend you use a Pentax AC adapter to perform the firmware update, but if you do not have a Pentax AC adapter, make certain that your batteries have a full charge.
- To begin the update, turn your camera on while holding down the MENU button. If you have followed the above instructions precisely, the camera will begin to load the new firmware file. You will see the message "NOW LOADING" then the camera will display the firmware update menu.

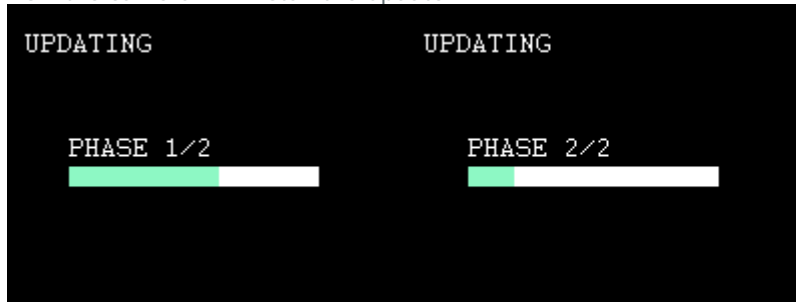


- This is the firmware update menu.

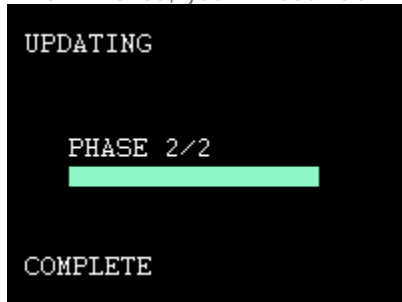


Select "YES" using your camera's 4-way controller (the default is NO as shown above), then press your camera's OK button.

8. Now the camera will install the update



9. When finished, you will see "COMPLETE" on your LCD screen as shown below.



Turn the camera off and remove the memory card.

10. With the memory card removed from the camera, check your firmware version by turning the camera back on while holding down the MENU button. If you see VER: 1.12, then you have successfully updated your camera. Before you begin to take pictures again, be sure to format your Compactflash card to erase the firmware update file.

INSTRUCTIONS - MACINTOSH DOWNLOAD

Mac users can follow this same process after clicking on the Macintosh download link below.

1. Download and save the Macintosh download file.
2. Double click it, to decompress it with your Stuffit expander program.
3. Connect the camera to the computer.
4. Copy the firmware file (fwdc112b.bin) to your camera's drive, then disconnect the camera from the computer.
5. Proceed with the installation of the firmware as outlined above.